

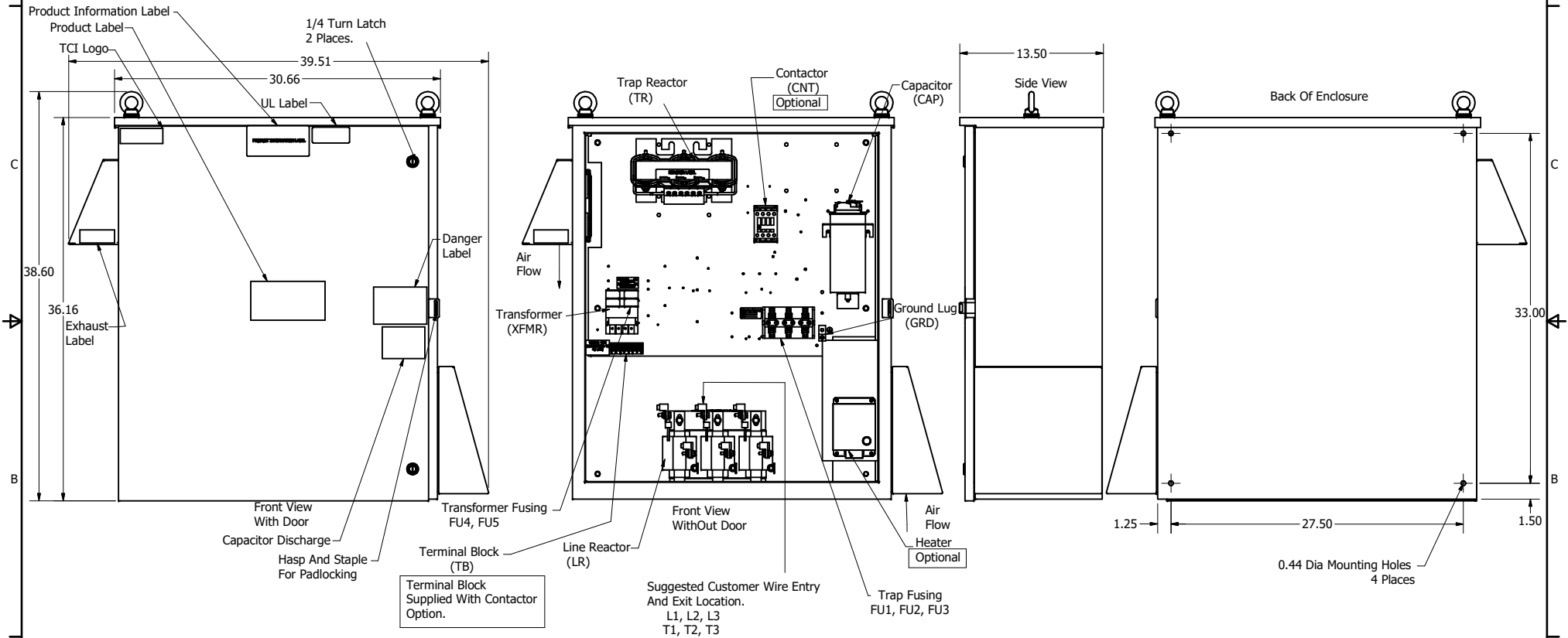
HGP Part Number	HorsePower (HP)	kVar	Harmonic	Voltage (V)	Hz.	Phase
HGP0020DW3----	20	25	5th	208	60	3

Note: For Torque Information
See IOM Manual

HGP Part Number	Schematic Drawing #	Approx Weight (LBS)
HGP0020DW3S0000	28697-208-2S	246
HGP0020DW3C0000	28697-208-2	248
HGP0020DW3C000H	28697-208-2H	252

Customer Connections.
L1, L2, L3, T1, T2, T3
Wire Range: 2/0 AWG to 14AWG.

Ground Lug
Wire Range: 2/0 to 14 AWG.



HGP0020DW3----			
Components	S0000	C0000	C000H
Line Reactor (LR)	x	x	x
Trap Reactor (TR)	x	x	x
Capacitor (Cap)	x	x	x
Trap Fusing, FU1, FU2, FU3	x	x	x
Contactor (CNT)		x	x
Transformer (XFMR)	x	x	x
XFMR Fusing, FU4, FU5	x	x	x
Heater			x

NOTE: USE ONLY HUBS OR FITTINGS THAT COMPLY
WITH UL514B FOR TYPE 3R ENCLOSURES

Customer Is Responsible For Installation to
Meet All National And Local Electrical Codes.

Material(s) Shall be RoHS Compliant

TCI, LLC CLAIMS PROPRIETARY RIGHTS IN THE MATERIAL HEREIN DISCLOSED. IT IS SUPPLIED WITHOUT PREJUDICE TO ANY PATENT RIGHTS OF TCI AND MAY NOT BE REPRODUCED OR USED TO MANUFACTURE ANYTHING SHOWN THEREIN WITHOUT WRITTEN PERMISSION FROM TCI.	REVISION	DATE	BY	± 1°
	DATE	DATE	DATE	DATE
	DATE	DATE	DATE	DATE
	DATE	DATE	DATE	DATE
TOLERANCES (EXCEPT AS NOTED) DECIMAL .XX ± .25 .XXX ± .10 FRACTIONAL ± 1/16 ANGULAR ± 1°				W132 N10611 Grant Drive Germantown, WI 53022 TCI HarmonicGuard Passive HGP, 20HP, 208/3/60, Type 3R 108264DG SCALE: 1/8 SHEET 1 OF 1